

# POLICY FOR CHILD PROTECTION IN SCHOOL



## RATIONALE

It is vital to promote the safety and protection of the children in the school and to comply with the Children Act 1989 and the recommendations of the 'Working Together to Safeguard Children' (2018) and Keeping Children Safe in Education (2019) documents. All children have a right to be protected from abuse and as such we ensure that the school shall refer any concerns about the welfare of its pupils to Social Care Services/the local Multi Agency Safeguarding Hub (MASH) in line with our Safeguarding Children Partners.

## PURPOSE

- To provide pupils with relevant information, skills and attitudes to help them resist abuse and prepare them for the responsibilities of later life. Together with these skills we hope that pupils will be confident to confide in staff on issues of harm, neglect, abuse and deprivation.
- To allow staff to be familiar and confident with the appropriate child protection procedures and issues. To be vigilant in cases of suspected child abuse, recognising the signs and symptoms and to follow the clear procedures in cases of disclosure and for the reporting of suspected abuse.
- To work with parents to build an understanding of the school's responsibility to ensure the welfare of all children and a recognition that this may occasionally require cases to be referred to other investigative agencies as a constructive and helpful measure.
- To monitor children who have been identified as at risk, keeping, in a secure location (MyConcern), clear records of pupils' progress, maintain confidentiality and yet provide information to other professionals, where required submitting reports for, and attending case conferences.
- To ensure up to date child protection training for the Designated Safeguarding Lead and to contribute to an inter-agency approach to child protection by developing effective and supportive liaison with other agencies.
- To review school procedures and improve the way child protection issues are managed.

## PROCESSES

The processes we follow are directly related to the purposes of this policy and are intended to show how these are actually put into practice.

- The skills will be delivered through the curriculum and especially via PSHE and P4C for example.
- We try to create an ethos and environment in which children feel secure, their viewpoints are valued, they are encouraged to talk and are listened to.
- We provide suitable support and guidance so that pupils have a range of appropriate adults whom they feel confident to approach if they are in difficulties.
- We use the curriculum to raise pupils' awareness and build confidence so that pupils have a range of contacts and strategies to ensure their own protection and understand the importance of protecting others.
- Staff treat the children with respect and all pupils are expected to treat each other and staff with respect.

- Staff joining the school are given suitable induction so that they have initial but clear guidance on child protection.
- Training for all staff is updated and reinforced, information and expertise in training is shared and all staff are familiar with the existence of this policy.

### **Other Relevant Documentation/Information**

<b>COLLEGE PARK INFANT SCHOOL</b>	
<b>Designated Safeguarding Lead(s)</b>	<b>Mrs J Lathem (Head of School) 30/06/2017 Mrs E Moran (Inclusion Leader) 27/02/2019</b>
<b>Deputy Designated Safeguarding Lead(s)</b>	<b>Mrs D Anderson (Executive Headteacher) 26/02/2018</b>

<b>LYNDHURST JUNIOR SCHOOL</b>	
<b>Designated Safeguarding Lead(s)</b>	<b>Ms A Beechurst (Head of School) 10/09/2018 Ms H Merel (Inclusion Leader) 18/03/2019</b>
<b>Deputy Designated Safeguarding Lead(s)</b>	<b>Mrs D Anderson (Executive Headteacher) Mrs S Bell (Kids Club Manager) 06/03/2018</b>

- Dates of last training for Designated Safeguarding Leads & Deputy DSLs (see above)
- Name of Designated Teacher for Looked After Children – Mrs E Moran, Ms H Merel (Inclusion Leaders)
- **Portsmouth Safeguarding Children Partnership**
- **Portsmouth Multi-Agency Safeguarding Hub (MASH)** 0845 671 0271
- ‘Working Together to Safeguard Children’ – a guide to inter agency working to safeguard and promote the welfare of children. July 2018 DfE
- ‘Keeping Children Safe in Education’. September 2019 HM Government
- What to do if you’re worried a child is being abused. March 2015 DfE
- Teaching online safety in schools (June 2019) DfE
- Safeguarding children in a digital world (BECTA ICT Advice 2006)
- Education Act 2002 (Section 175)
- Agreed Child Protection Procedures - attached
- Skin map for cases of physical abuse – attached

\*This policy should be read in conjunction with College Park Infant and Lyndhurst Junior Schools’ Safeguarding Policy which clearly states that “Child Protection is a part of safeguarding and promoting welfare. This refers to the activity that is undertaken to protect specific children who are suffering, or are likely to suffer significant harm.”

### **REVIEW**

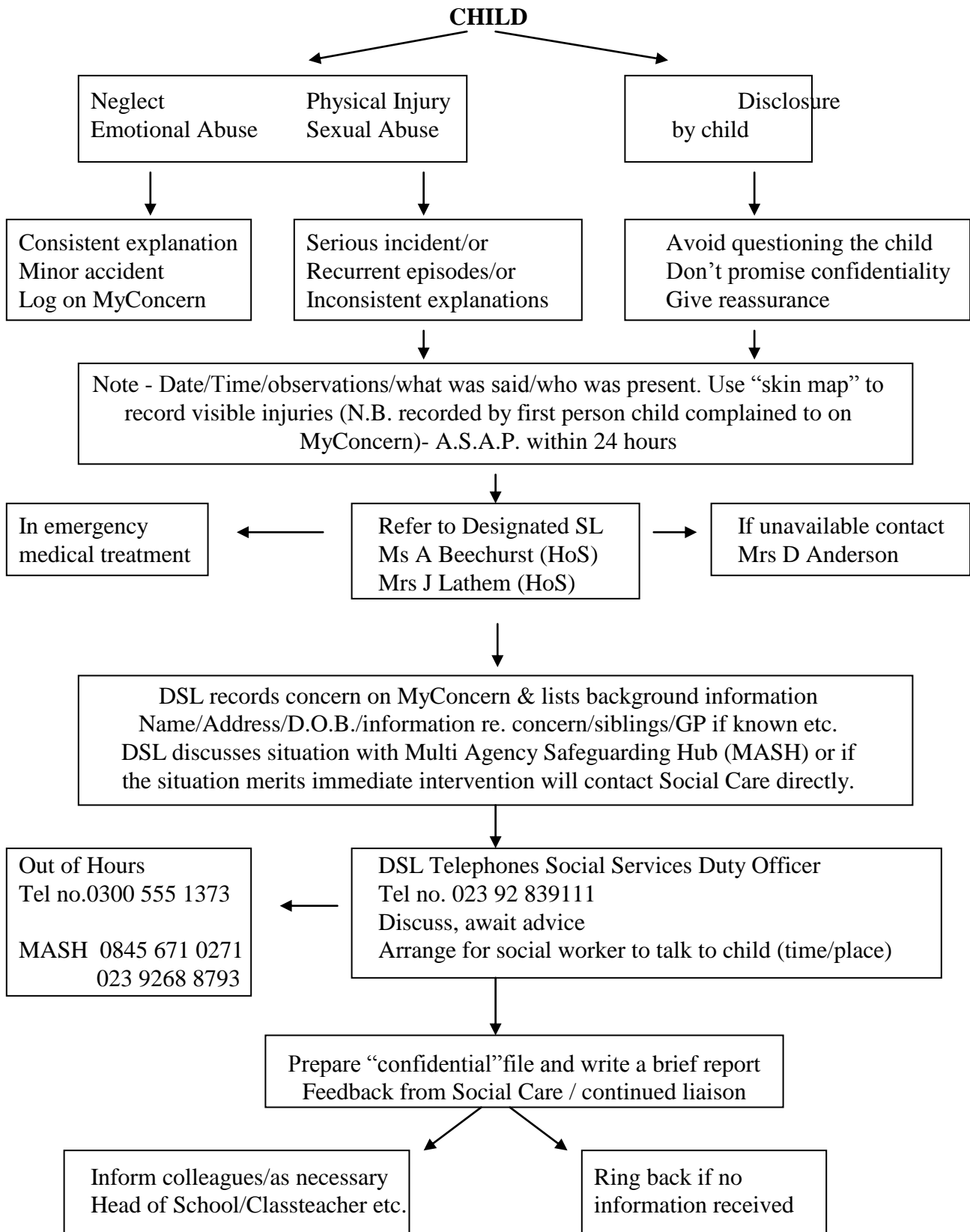
By Whom: Designated Safeguarding Lead and Governors’ Resources Committee

When: Annually

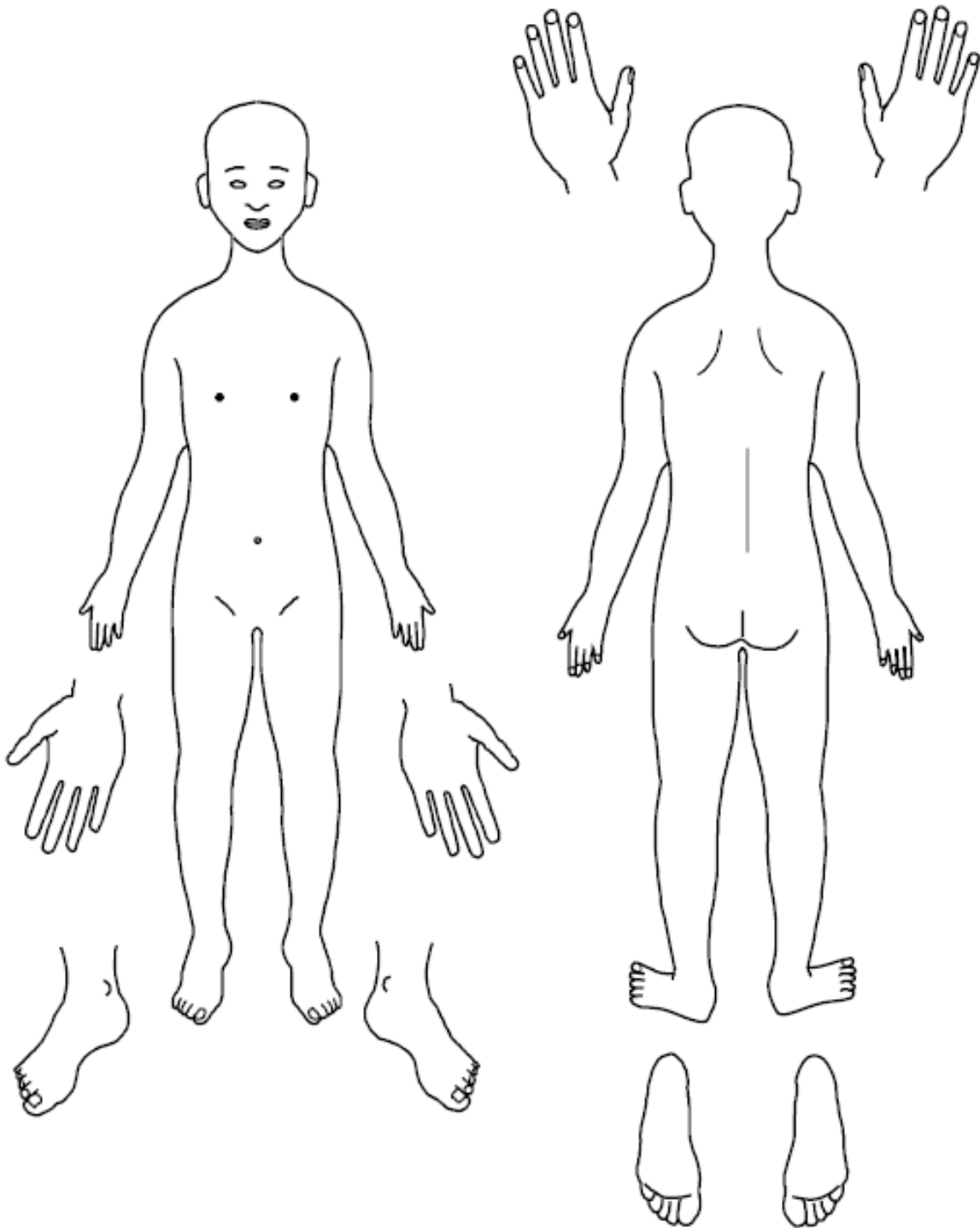
Agreed: September 2019

# CHILD PROTECTION PROCEDURES

RELEVANT TO ALL TEACHING AND NON-TEACHING STAFF



**SKIN MAP**



Name of Child: \_\_\_\_\_

Date of birth: \_\_\_\_\_ Date of recording: \_\_\_\_\_

Name of completer: \_\_\_\_\_